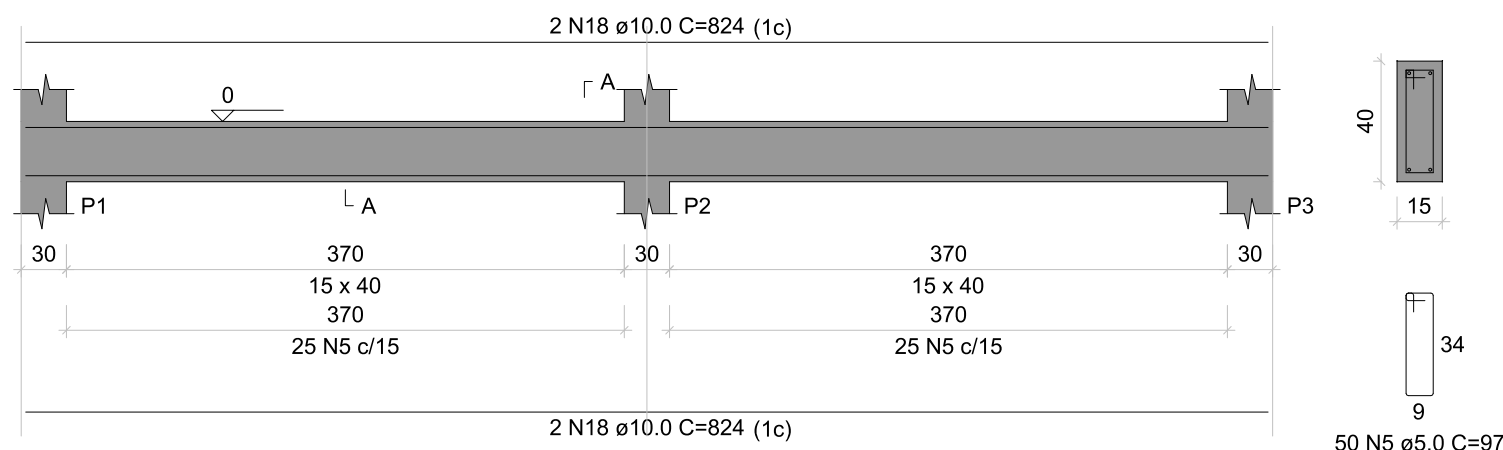
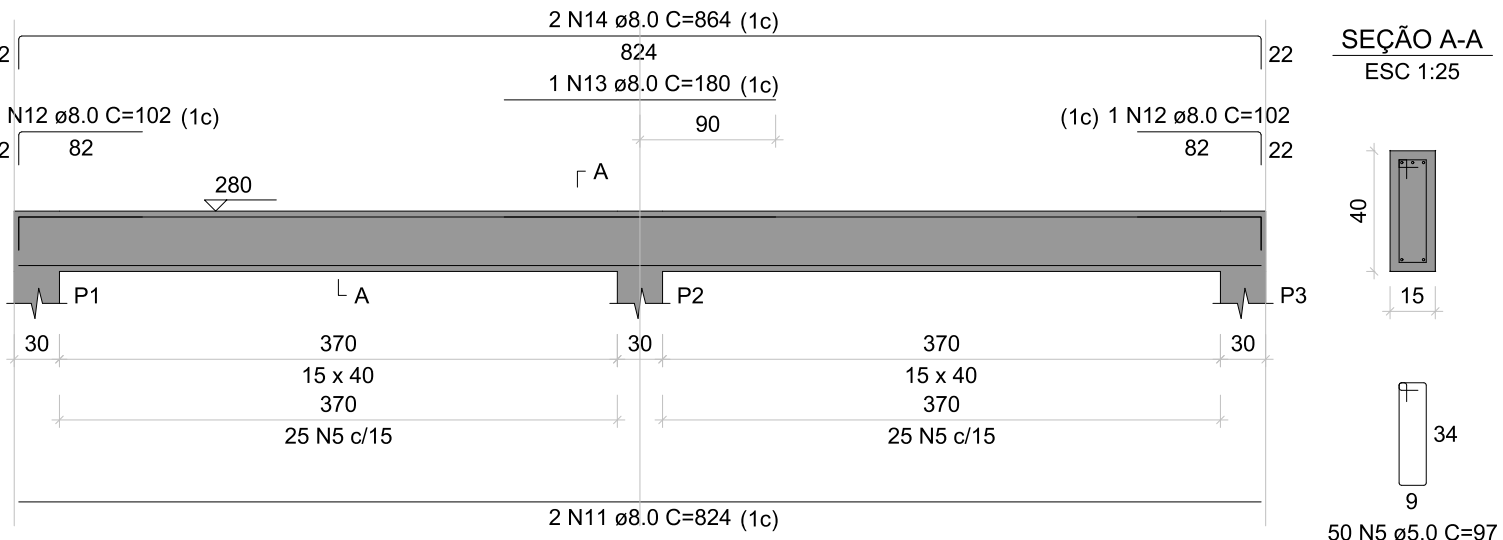
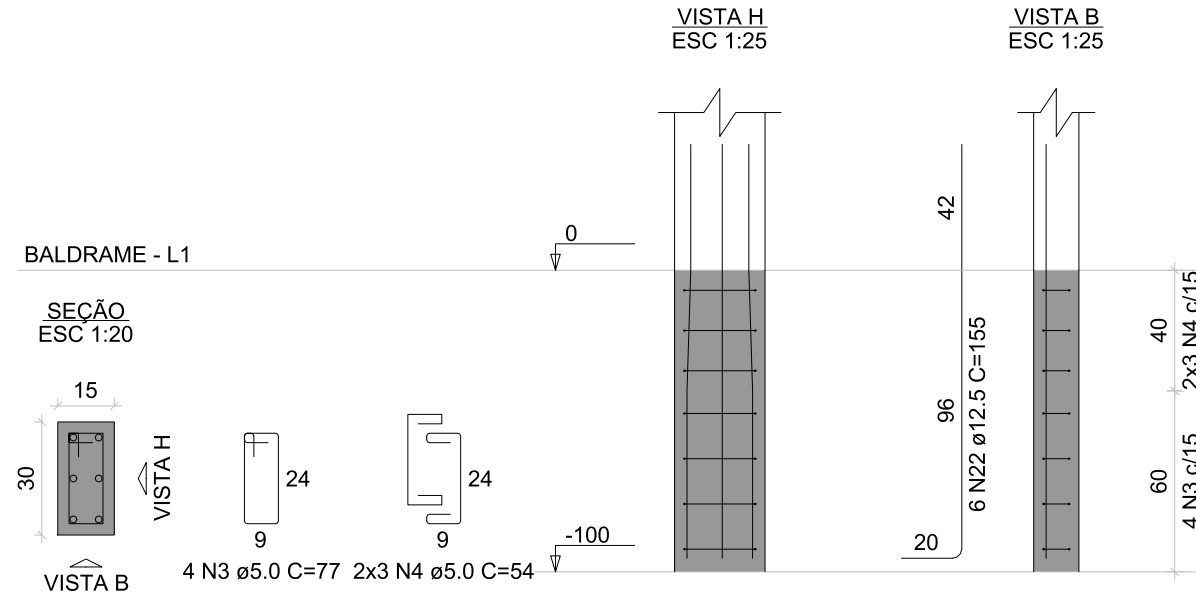


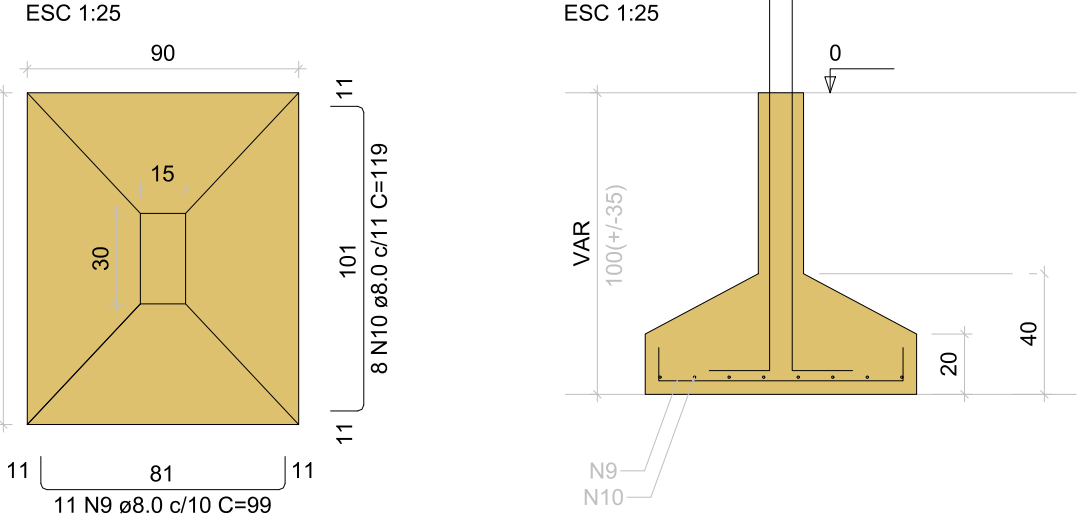
ESC 1:50



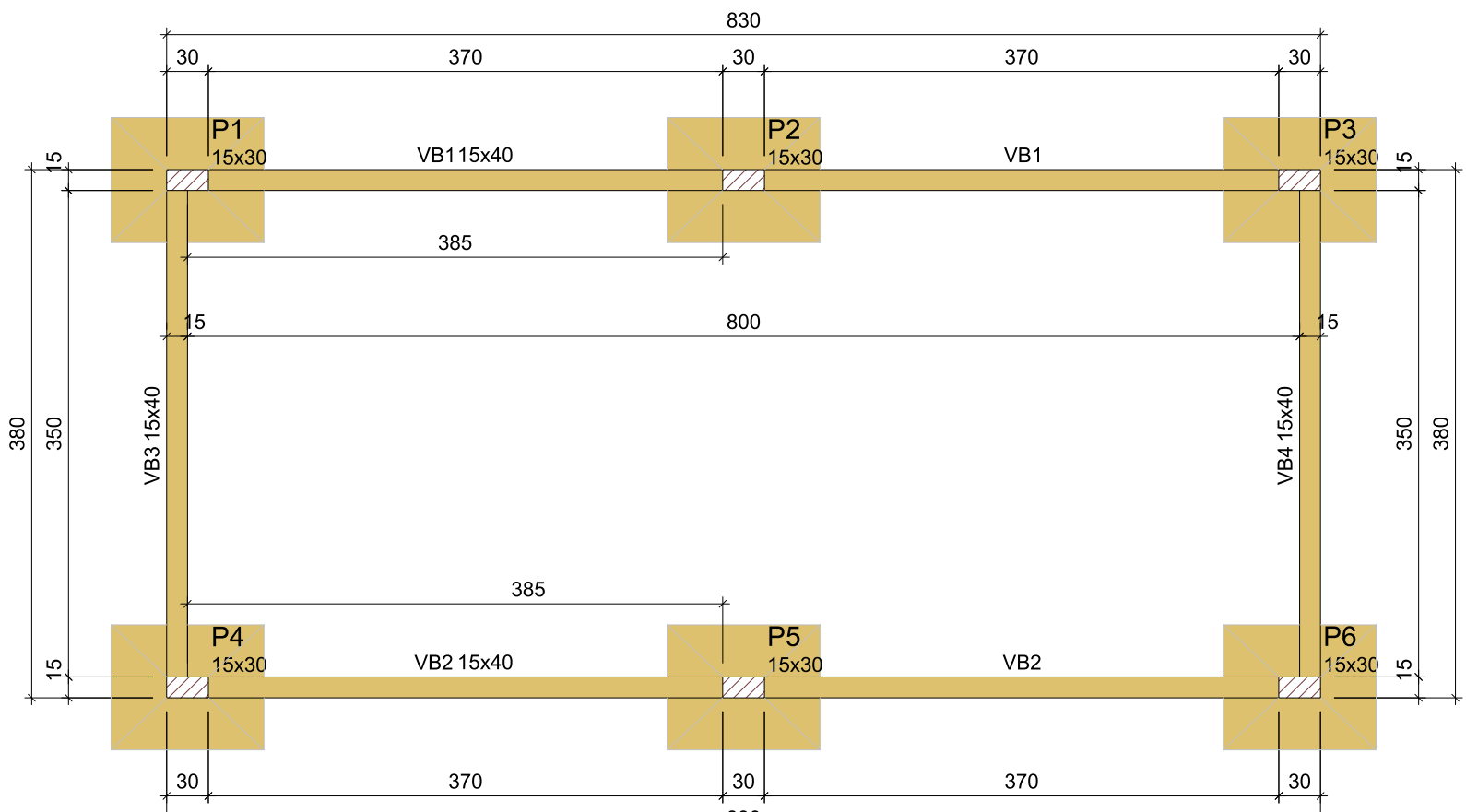
ESC 1:50


$$P_1 = P_2 = P_3 = P_4 = P_5 = P_6$$


PLANTA

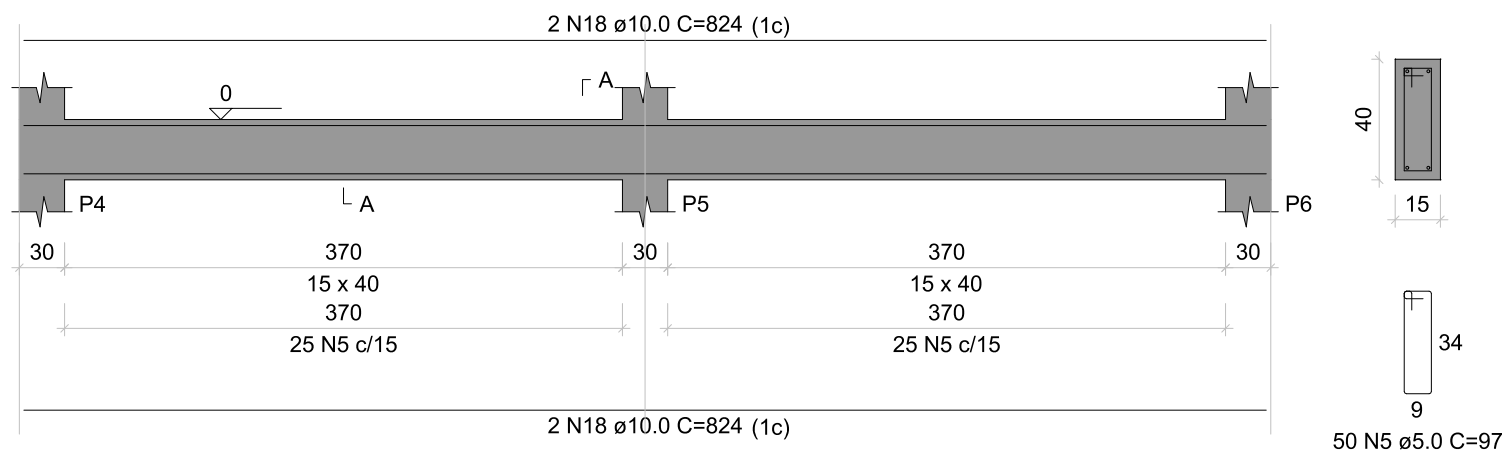


Solo com capacidade de suporte  $> 1.20 \text{ kgf/cm}^2$   
Solo compactado sobre a sapata  
peso específico  $> 1600.00 \text{ kgf/m}^3$

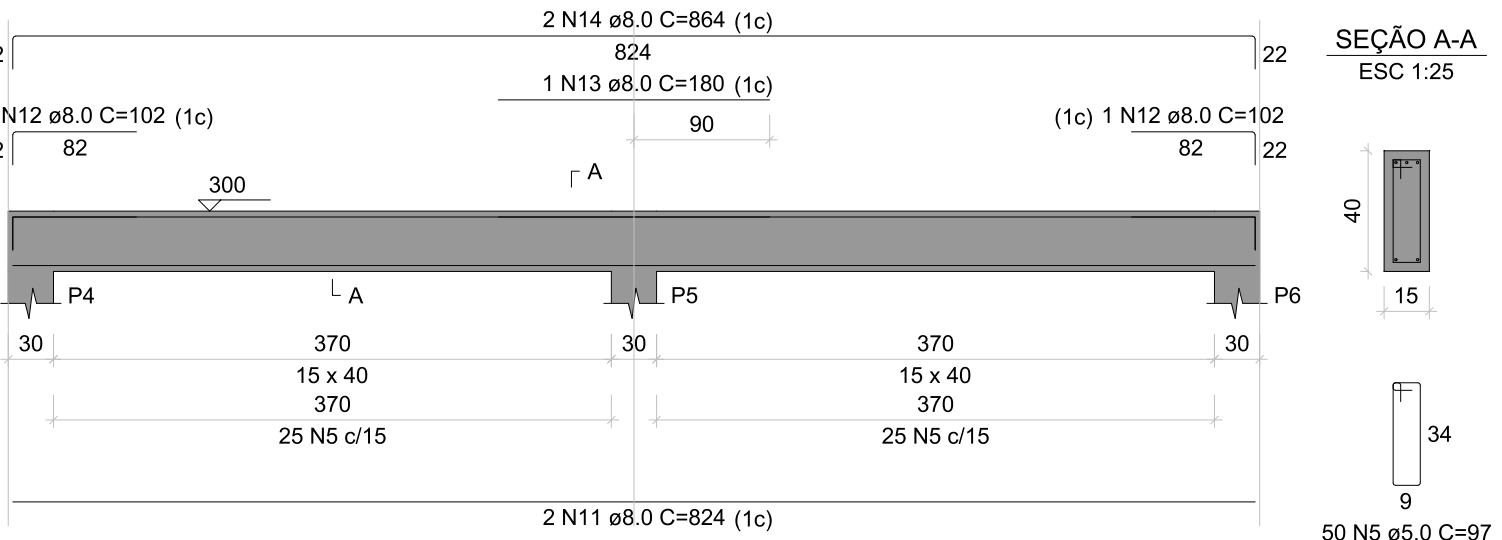


escala 1:50

ESC 1:50

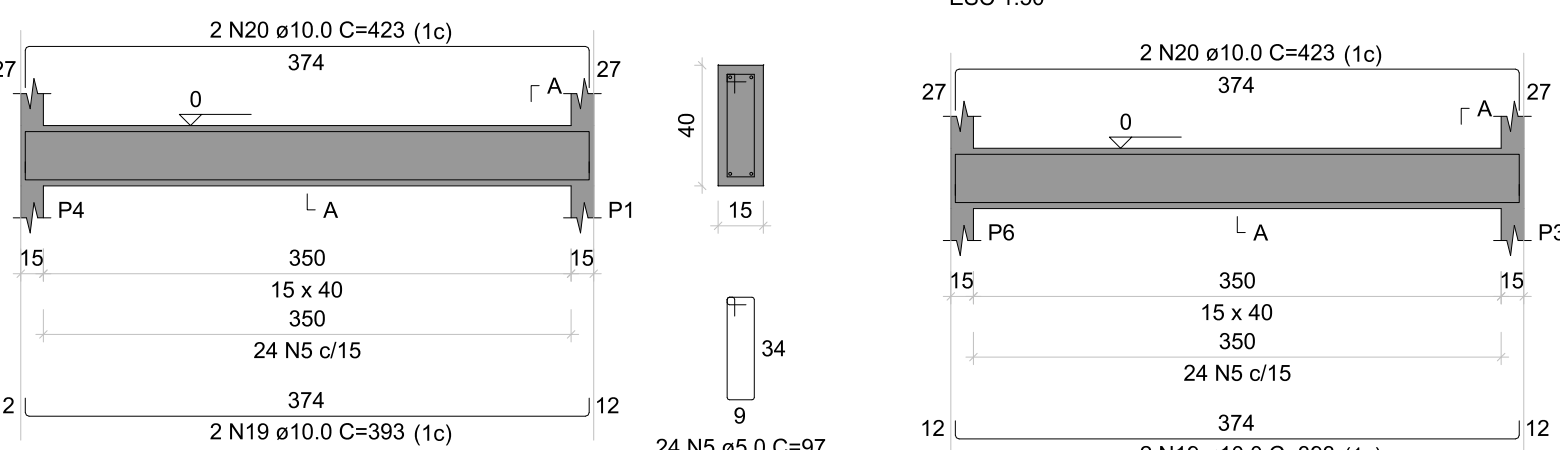


ESC 1:50

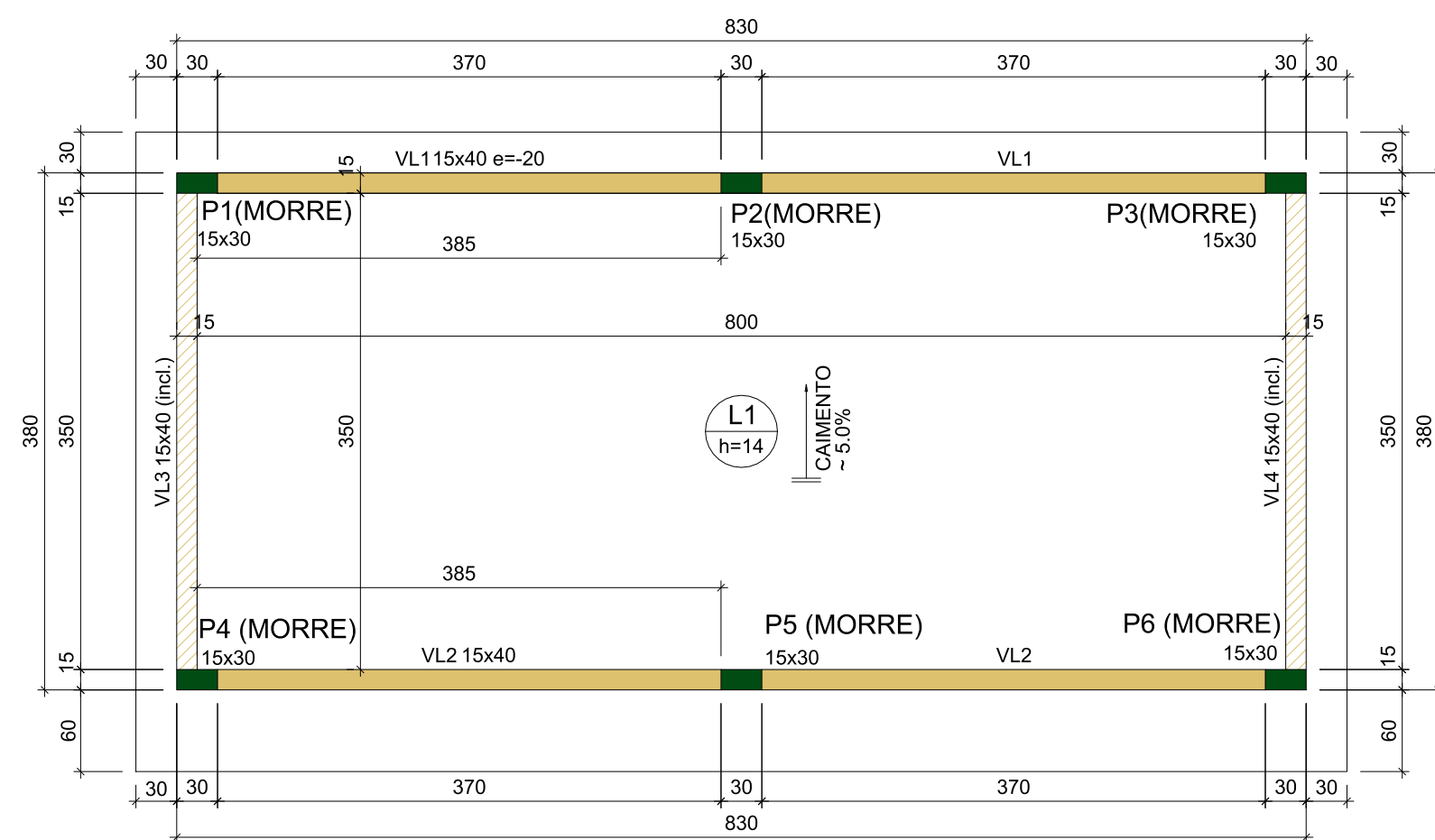
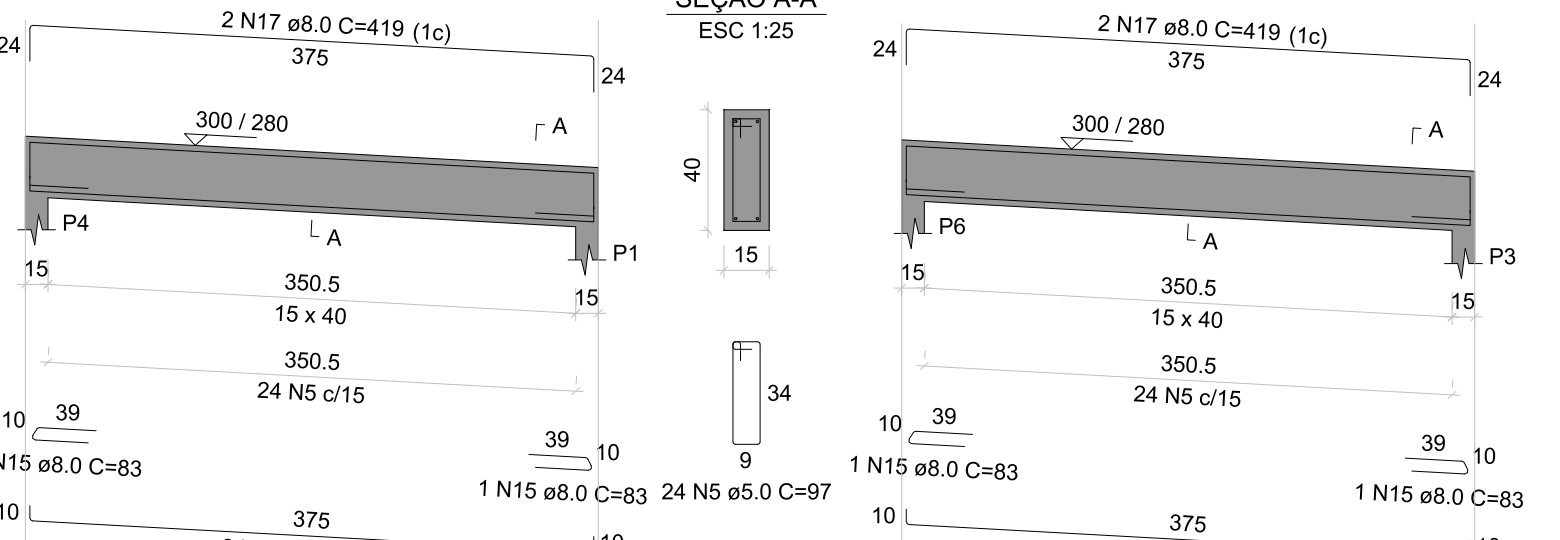


escala 1:50

ESC 1:50



## ESC 1:50



escala 1:50



Vigas			
Nome	Seção (cm)	Elevação (cm)	Nível (cm)
VL1	15x40	-20	280
VL2	15x40	0	300
VL3	15x40	0 / -20	300 / 280
VL4	15x40	0 / -20	300 / 280

Características dos materiais	
fck (kgf/cm <sup>2</sup> )	Ecs (kgf/cm <sup>2</sup> )
300	268384

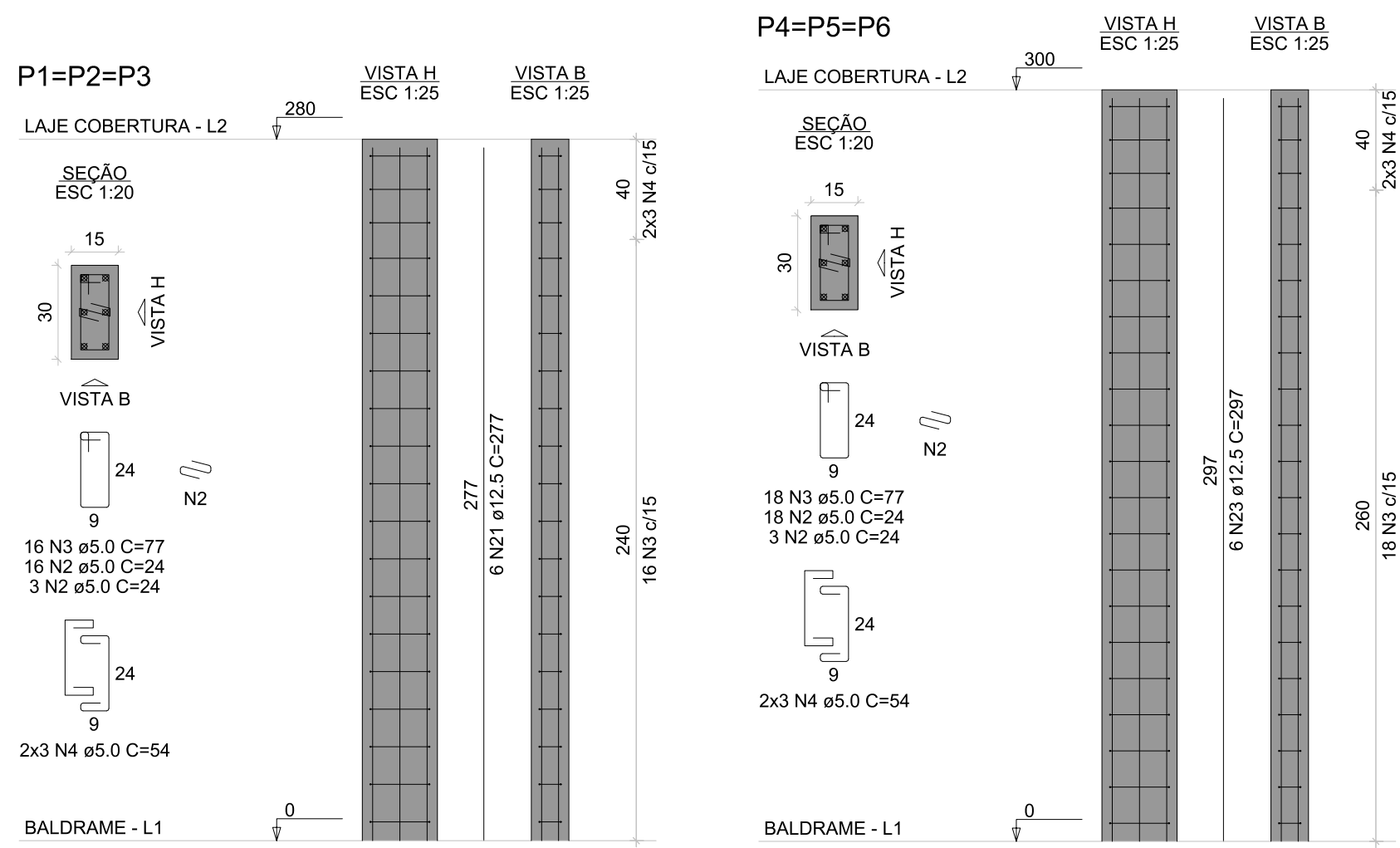
Dimensão máxima do agregado = 19 mm

Lajes								
Dados						Sobrecarga (kgf/m²)		
Nome	Tipo	Altura (cm)	Elevação (cm)	Nível (cm)	Peso próprio (kgf/m²)	Adicional	Acidental	Localizada
L1	Macica	14	0	300	351	80	200	-

Pilares			
Nome	Seção (cm)	Elevação (cm)	Nível (cm)
P1	15x30	-20	280
P2	15x30	-20	280
P3	15x30	-20	280
P4	15x30	0	300
P5	15x30	0	300
P6	15x30	0	300

Legenda das vigas e paredes	
	Viga
	Viga inclinada

Legenda dos pilares	
	Pilar que morre



Pilares			
Nome	Seção (cm)	Elevação (cm)	Nível (cm)
P1	15x30	0	0
P2	15x30	0	0
P3	15x30	0	0
P4	15x30	0	0
P5	15x30	0	0
P6	15x30	0	0

Vigas			
Nome	Seção (cm)	Elevação (cm)	Nível (cm)
VL1	15x40	0	0
VL2	15x40	0	0
VL3	15x40	0	0
VL4	15x40	0	0

Características dos materiais		
Elemento	f <sub>ck</sub> (kgf/cm <sup>2</sup> )	E <sub>cs</sub> (kgf/cm <sup>2</sup> )
Vigas	300	268384
Pilares	300	268384
Sapatas	250	241500

Dimensão máxima do agregado = 19 mm

Legenda dos pilares	
	Pilar que passa